

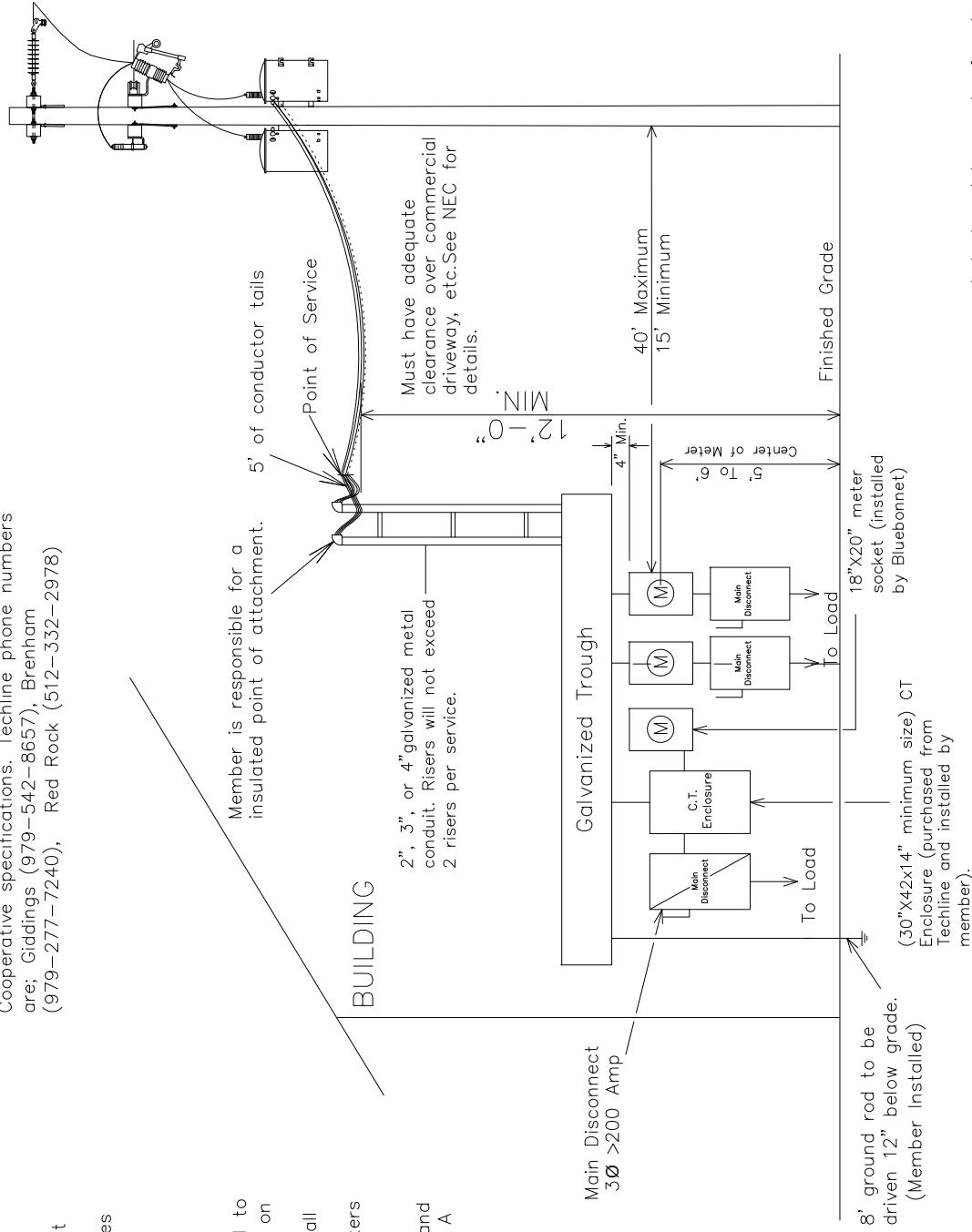
Notes:

- When more than (1) disconnect is used, a galvanized trough system shall be installed.
- Line taps shall be made in the galvanized wire trough by the electrical contractor.
- (2) disconnects can be substituted with (1) fused disconnect.
- No more than (2) risers or (2) conductors per phase shall be allowed.
- Wire shall be sized to total name plate disconnect sizes.
- Neutral(s) may be reduced no more than two sizes on residential applications. No reduction of the neutral(s) is allowed on commercial application.
- Total disconnect's will not exceed a total of 800 amps.
- The electrical contractor will notify Bluebonnet 72 hours in advance to schedule Bluebonnet personal to deliver the CT's. The electrician shall install them on the rack with the correct polarity before the conductor is brought thru the 30"x42" CT can. Call 800-842-7708 to schedule a connect.
- Gutter can be mounted on top or bottom of meters as long as the center of the meter distance in 5'-6".
- Maintain 3"-6" distance between the disconnect and the meter can. Member shall use a metal nipple. A straight or offset nipple is acceptable.

*
 WIRING INSTALLATIONS MUST MEET LOCAL GUIDELINES, IF APPLICABLE, SET FORTH BY CITY, COUNTY, OR OTHER GOVERNING ENTITY IN THE EVENT THESE REQUIREMENTS ARE MORE STRINGENT THAN BLUEBONNET SPECIFICATIONS.
 *

FOR THE MEMBER'S SAFETY, WIRING INSTALLATIONS SHALL CONFORM TO THE REQUIREMENTS OF THE NEC, TDLR AND NESC.

11. Type K-4, Bolt-in type meter can:
 Description: 400 amp, 4 terminals, 3-wire, residential/commercial socket singlephase self-contained, large coverplate. These meter cans are available for purchase through Techline or any other electrical supplier provided it meets all Bluebonnet Electric Cooperative specifications. Techline phone numbers are: Giddings (979-542-8657), Brenham (979-277-7240), Red Rock (512-332-2978)



Latest update can be found at
<http://www.bluebonnetelectric.coop>

3Ø 200-800 TOTAL AMP WITH MULTIPLE METERING POINTS ON BUILDING. SERVICE TYPE		Checked By : MS COMMITTEE	Approved By : SC
DATE	REVISIONS	Drawn By : SD	Scale : NONE
		Date : 01-29-2019	MS-115-3

