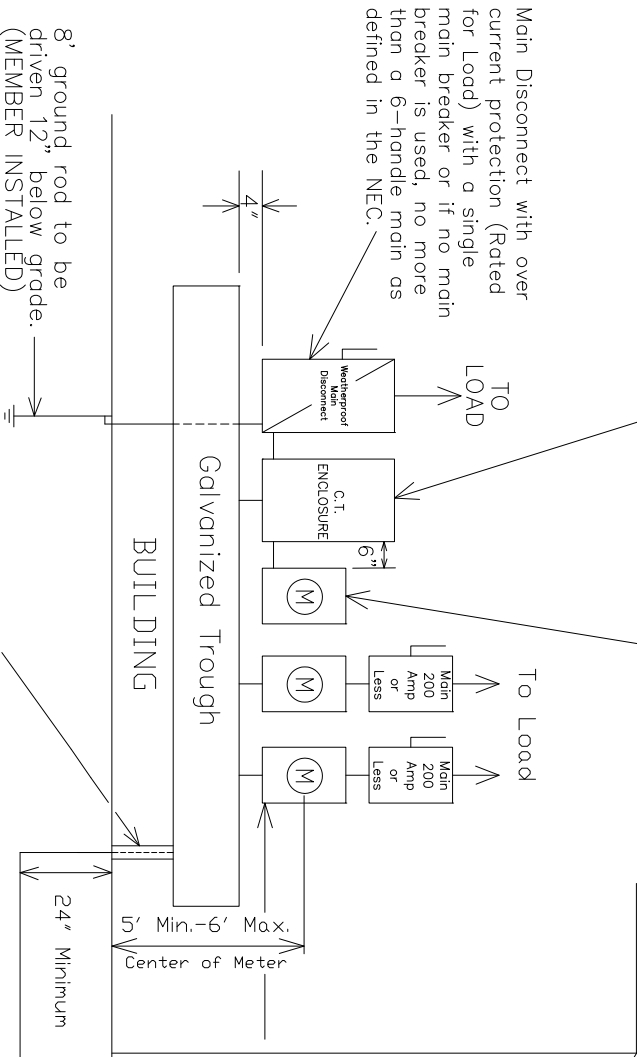


1Ø or 3Ø CT enclosure (30"x42"x14" minimum size) can be purchased from TechLine and installed by member.

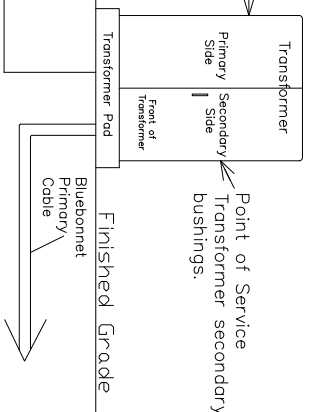
12-1/4" x 20-1/4" meter socket (installed by Bluebonnet).



**Notes:**

- Line taps shall be made in the galvanized wiring trough by the electrical contractor.
- The electrical contractor will notify Bluebonnet 72 hours in advance to schedule Bluebonnet personnel to deliver the CT's before the service wire is pulled. The electrician shall install the CT's on the rack with the correct polarity before the conductor is brought thru the 30"x42" minimum size CT enclosure. call 800-842-7708 to schedule a connect.
- Wire shall be sized to total name plate disconnect sizes.
- Neutral(s) may be reduced no more than two sizes on residential application. No reduction of the neutral(s) is allowed on commercial application. For all URD jobs, electricians shall call TEXAS811 for locates before digging to Bluebonnet equipment. No private utilities will be located.
- Cooperative will complete wiring into transformer. Have an additional 10' of wire for termination.
- More than (6) main disconnects require a properly sized main disconnect ahead of the galvanized trough.
- Weatherproof fittings required.
- Meter assembly must remain unenclosed on exterior of structure.
- All connections inside pad mounted transformer will be made by Bluebonnet.
- THREE PHASE APPLICATIONS ONLY DESCRIPTION:**  
200amp, 7 terminal, 3-phase, 4-wire will require a lever by-pass meeting ANSI C12.7, UL 414, and NEMA 3R. Meter cans are available for purchase through Techline or any other electrical supplier provided it meets all Bluebonnet Electric Cooperative specifications. Techline (512-332-2978).
- Member/Electrician shall coordinate with Bluebonnet personnel to install all conduit and the pulling of the secondary wire to the transformer. Member/Electrician shall notify Bluebonnet 48 hours in advance to schedule a time/date to perform the work.
- If additional trips are made to the site by Bluebonnet personnel, applicable fees may be applied.
- Maintain 3"-6" distance between the disconnect and the meter can. Member shall use a metal nipple. A straight or offset nipple is acceptable.

100' maximum distance.  
6' minimum distance from side & 10' minimum distance from front of transformer.  
Non-combustible walls = 5 feet  
>75kVA = 10 feet  
>75kVA = 20 feet



Conduit above finished grade shall be minimum galvanized metal or schedule 80 Gray PVC rigid nonmetallic conduit.

Conduit below finished grade from underground transformer shall be minimum schedule 40 Gray PVC rigid nonmetallic conduit.

8' ground rod to be driven 12" below grade. (MEMBER INSTALLED)

Latest update can be found at [www.bluebonnetelectric.coop/myHome/electricServices/meterLoop.aspx](http://www.bluebonnetelectric.coop/myHome/electricServices/meterLoop.aspx)

FOR THE MEMBER'S SAFETY, WIRING INSTALLATION AND MATERIAL SHALL CONFORM TO THE REQUIREMENTS OF THE NEC, TDLR AND NESC.

**\* WIRING INSTALLATIONS MUST MEET LOCAL GUIDELINES, IF APPLICABLE, SET FORTH BY CITY, COUNTY, OR OTHER GOVERNING ENTITY IN THE EVENT THESE REQUIREMENTS ARE MORE STRINGENT THAN BLUEBONNET SPECIFICATIONS. \***



**Bluebonnet**

3 PHASE >200 AMP UNDERGROUND WITH MULTIPLE METERING POINTS AND CT METERING ON BUILDING.		Drawn By :	RG	Checked By :	MS COMMITTEE	Approved By :	TE
DATE	01-30-2017	REVISIONS	Changed the dimensions of the CT Enclosure.	Scale :	NONE	Date :	01-30-2017
							MS-202B3