

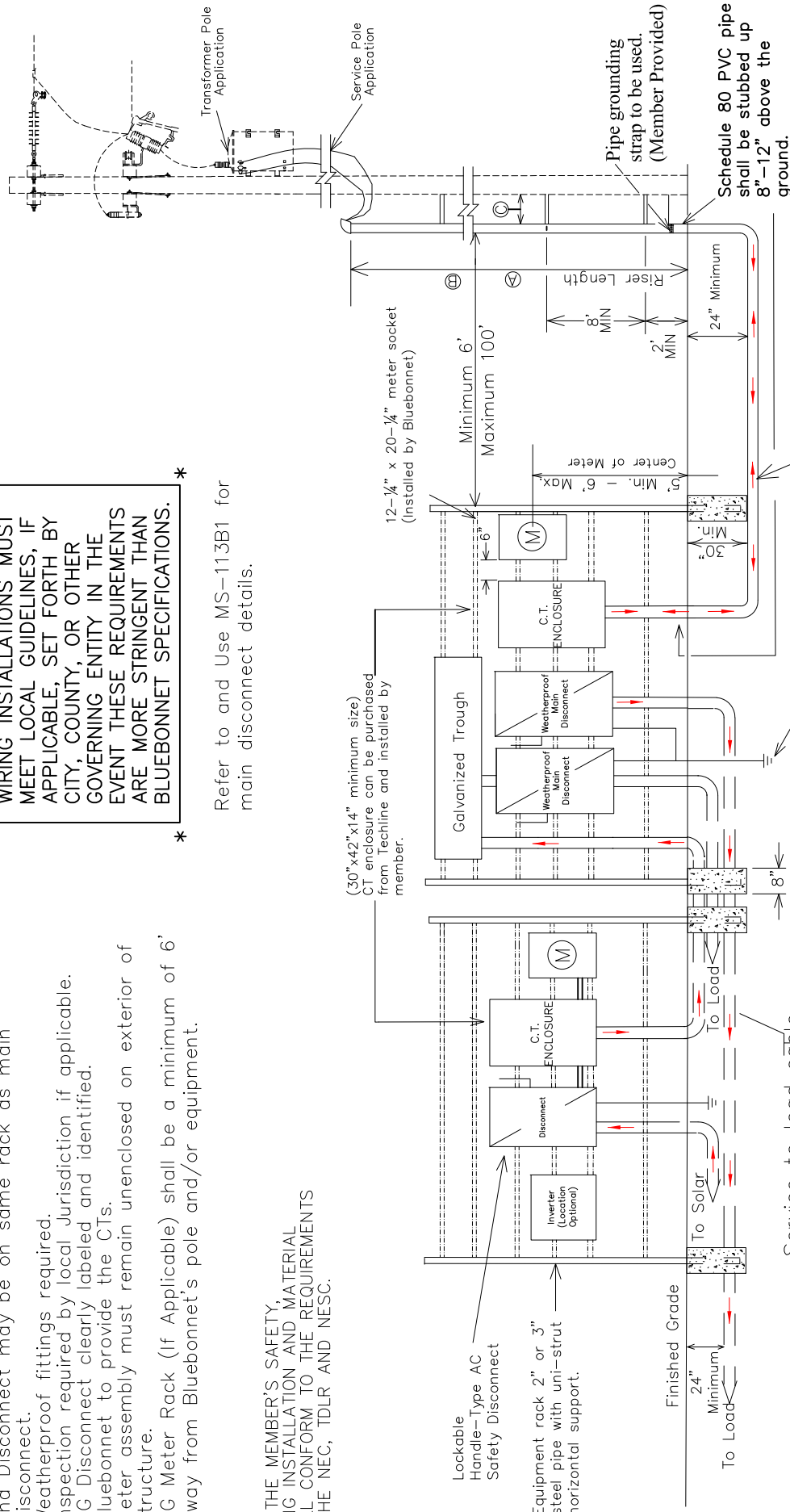
Notes:

1. DG Disconnect within 25' of Main Disconnect. DG meter and Disconnect may be on same rack as main Disconnect.
2. Weatherproof fittings required.
3. Inspection required by local Jurisdiction if applicable.
4. DG Disconnect clearly labeled and identified.
5. Bluebonnet to provide the CTs.
6. Meter assembly must remain unenclosed on exterior of structure.
7. DG Meter Rack (If Applicable) shall be a minimum of 6' away from Bluebonnet's pole and/or equipment.

FOR THE MEMBER'S SAFETY,
WIRING INSTALLATION AND MATERIAL
SHALL CONFORM TO THE REQUIREMENTS
OF THE NEC, TDLR AND NESC.

* WIRING INSTALLATIONS MUST MEET LOCAL GUIDELINES, IF APPLICABLE, SET FORTH BY CITY, COUNTY, OR OTHER GOVERNING ENTITY IN THE EVENT THESE REQUIREMENTS ARE MORE STRINGENT THAN BLUEBONNET SPECIFICATIONS. *


Refer to and Use MS-113B1 for main disconnect details.



Minimum schedule 40 rigid nonmetallic service conduit below finished grade. No schedule 40 conduit allowed above ground level on source side of main disconnect.

Service to load cable enclosed in minimum schedule 40 Gray PVC nonmetallic conduit.

Latest update can be found at
<http://www.bluebonnetelectric.coop>

	50kW OR >= RENEWABLE 1 PHASE >400-800 AMP SERVICE WITH CT METER ON RACK		Drawn By : SD	Checked By : DER COMMITTEE	Approved By : SC
	DATE		Scale : NONE	Date : 01-29-2019	MS-553-1