

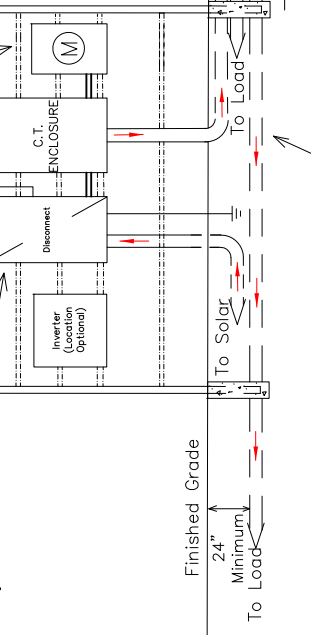
Notes:

1. DG Disconnect within 25' of Main Disconnect. DG meter and Disconnect may be on same rack as main Disconnect.
2. Weatherproof fittings required.
3. Inspection required by local Jurisdiction if applicable.
4. DG Disconnect clearly labeled and identified.
5. Bluebonnet to provide the CTs.
6. Meter assembly must remain unenclosed on exterior of structure.
7. DG Meter Rack (If Applicable) shall be a minimum of 6' away from Bluebonnet's pole and/or equipment.

12-1/4" x 20-1/4" meter socket (installed by Bluebonnet). (For Solar)

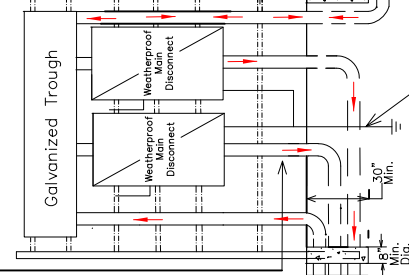
(30"X42"X14" minimum size) Bluebonnet).
CT enclosure (purchased from Techline and installed by member).

Lockable Handle-Type AC Safety Disconnect



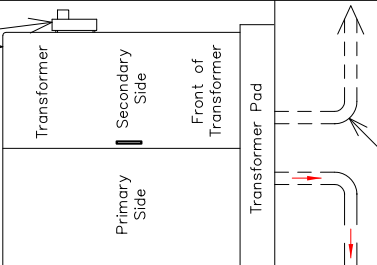
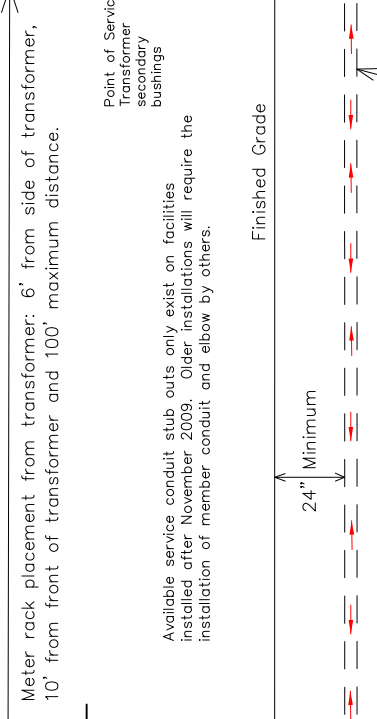
Service to load cable enclosed in minimum schedule 40 Gray PVC nonmetallic conduit.

Conduit above finished grade shall be minimum galvanized metal or schedule 80 Gray PVC rigid nonmetallic conduit.



8' ground rod to be driven 12" below grade (Member Installed)

Equipment rack 2" steel pipe with uni-strut horizontal supports.

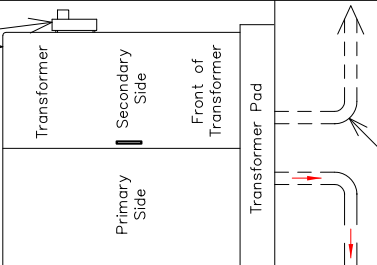


Conduit below finished grade from underground transformer shall be minimum schedule 40 rigid nonmetallic conduit.

WIRING INSTALLATIONS MUST MEET LOCAL GUIDELINES, IF APPLICABLE, SET FORTH BY CITY, COUNTY, OR OTHER GOVERNING ENTITY IN THE EVENT THESE REQUIREMENTS ARE MORE STRINGENT THAN BLUEBONNET SPECIFICATIONS.

FOR THE MEMBER'S SAFETY, WIRING INSTALLATION AND MATERIAL SHALL CONFORM TO THE REQUIREMENTS OF THE NEC, TDLR AND NESC.

Refer to and Use MS-204A3 for main disconnect details.



Latest update can be found at www.bluebonnetelectric.coop

DATE	50kW OR >= RENEWABLE >200 AMPS UNDERGROUND SERVICE WITH DISCONNECT ON RACK OR BUILDING		Drawn By : SD	Checked By : Approved By : DER COMMITTEE SC
	REVISIONS		Scale : NONE	Date : 01-29-2019
				MS-554-3

