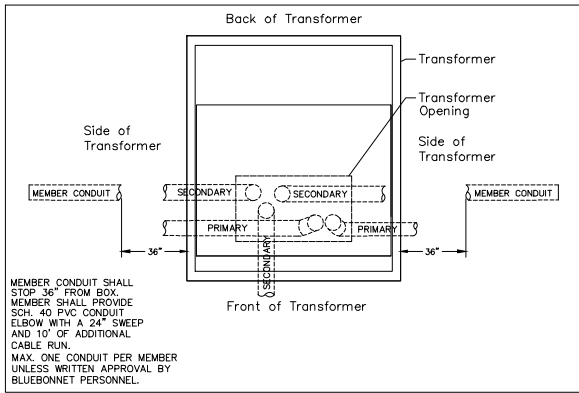


Notes:

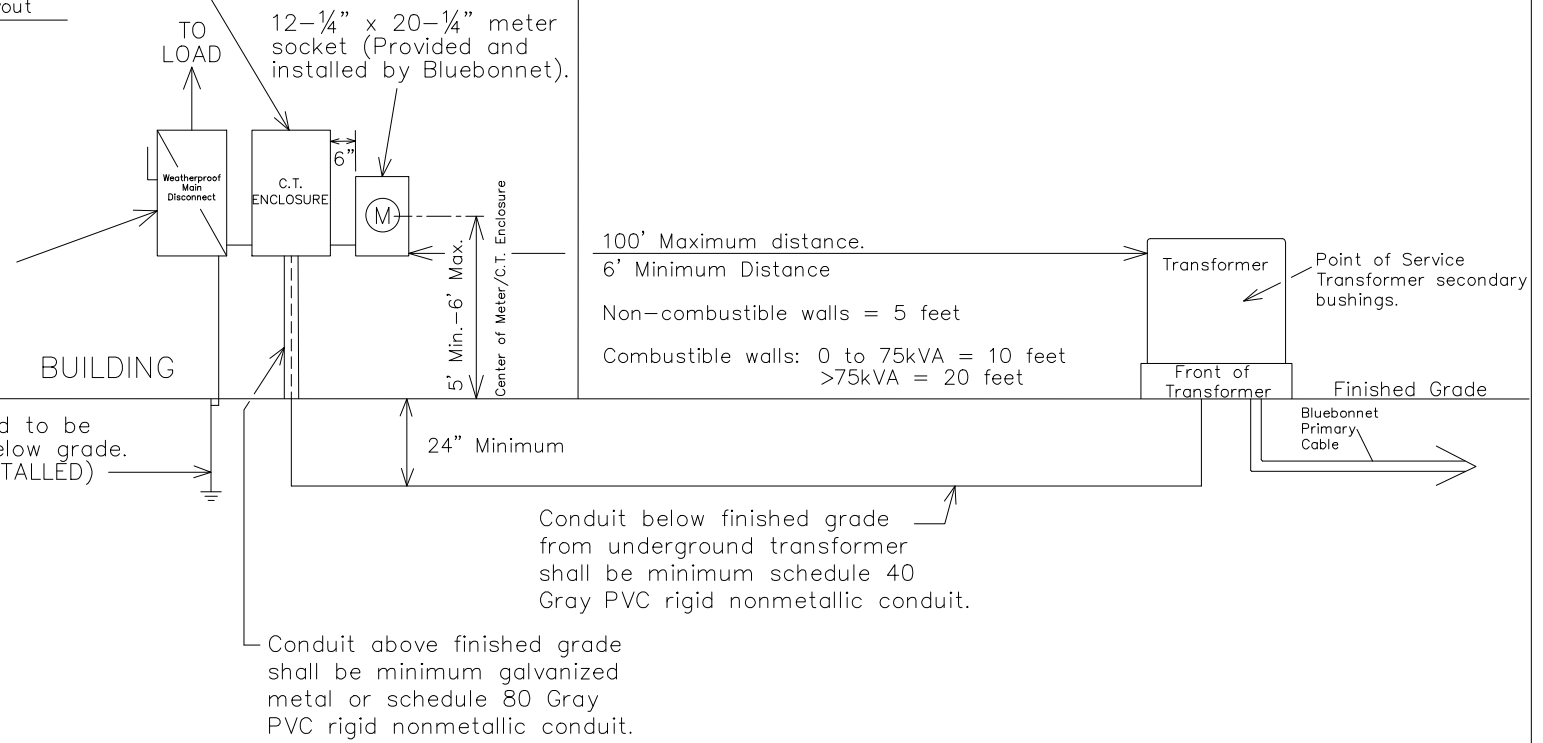
1. Line taps shall be made in the galvanized wiring trough by the electrical contractor.
2. Wire shall be sized to total name plate disconnect sizes.
3. Cooperative will complete wiring into transformer or UJB. Have an additional 10' of wire for termination.
4. All connections inside pad mounted transformer will be made by Bluebonnet.
5. Member/Electrician shall coordinate with Bluebonnet personnel to install all conduit and the pulling of the secondary wire to the transformer. Member/Electrician shall notify Bluebonnet 48 hours in advance to schedule a time/date to perform the work.
6. If additional trips are made to the site by Bluebonnet personnel, applicable fees may be applied.
7. Maintain 3"-6" distance between the disconnect and the meter can. Member shall use a metal nipple. A straight or offset nipple is acceptable.
8. #6 solid, bare ground copper wire and clamp attached to Bluebonnet's pole ground.
9. Max wire size for single-phase underground transformers to be 350 kcmil
10. Limit number of conductors to 4 per phase.
11. See "Metering Guidelines" for other applicable notes.



Single Phase Transformer Layout

See Metering Guidelines for Enclosure Details.

Main Disconnect with over current protection (Rated for Load) with a single main breaker as defined in the NEC.



1 PHASE >400 AMP SERVICE WITH CT METERING ON BUILDING OR RACK		Drawn By : RG	Checked By : MS COMMITTEE	Approved By : MS COMMITTEE
11-20-2017	Added Solid Copper Note.	Scale : NONE	Date : 11-04-2021	MS-204B1
04-16-2021	Changed the size of the CT Meter Can requirements.			
11-04-2021	Added Main Breaker Note			